

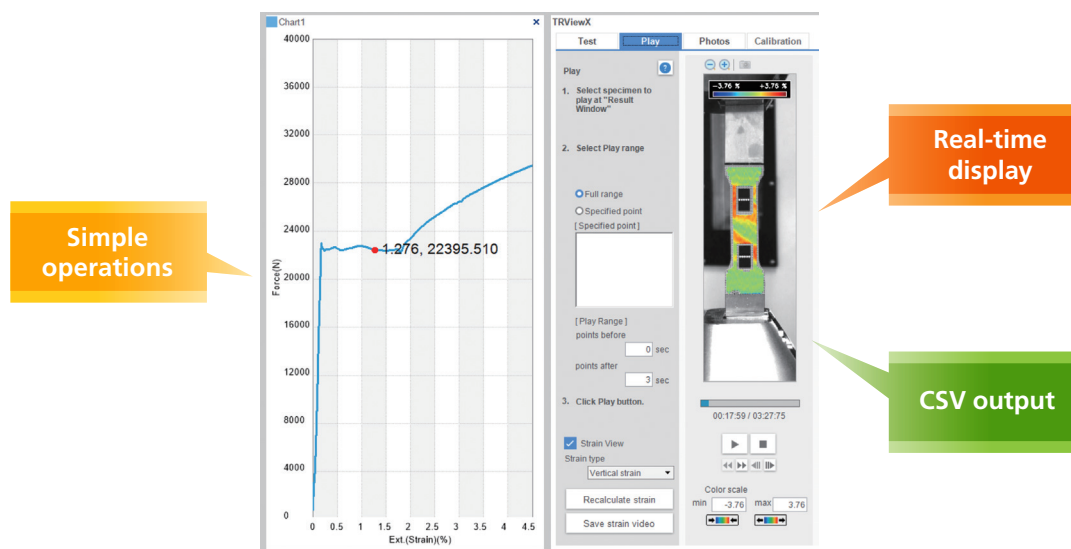
Optional Software for the TRViewX Non-Contact Digital Video Extensometer

Real-Time Strain View

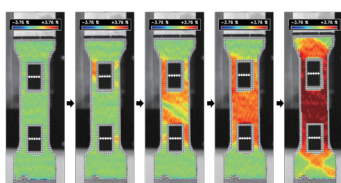
Grid marks applied to the surface of the sample are compared before and after deformation of the object, enabling real-time 2D mapping of the strain distribution.

Operations are performed seamlessly using the TRViewX software.

The strain data can be saved in CSV format, allowing import into simulation software.

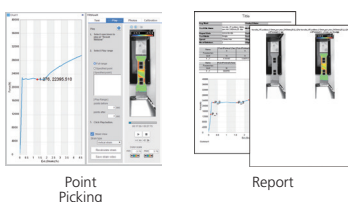


1. Displays the Strain Distribution in Real Time



- Real-time display!
- The strain distribution can be observed together with the stress-strain curve.
- Strain behavior can be determined while controlling the strain rate.

2. Simple, Seamless Operations



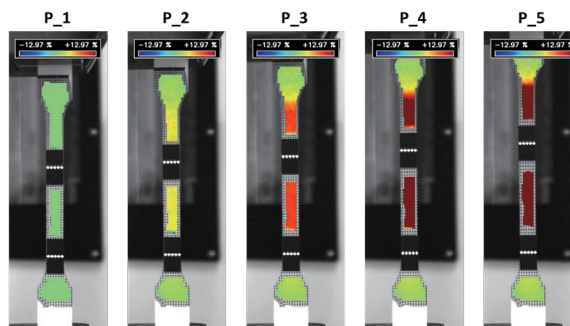
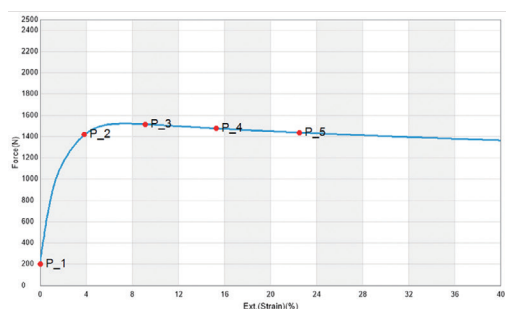
- Simple operations completely linked to TRAPEZIUM™ X-V software.
- Strain images at specified points on the curve can be displayed.
- Reports incorporating strain images can be created.

3. Saves Strain Values in CSV Format

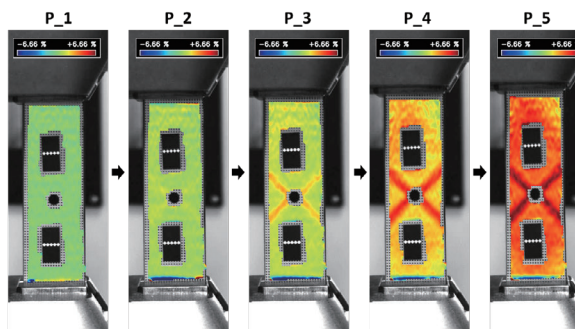
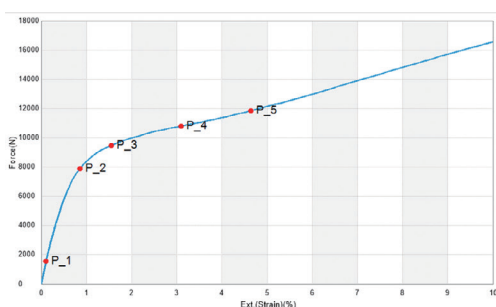


- Capable of export to simulation software.

Example of Plastic Measurements



Example of Open-Hole CFRP Plate Measurements

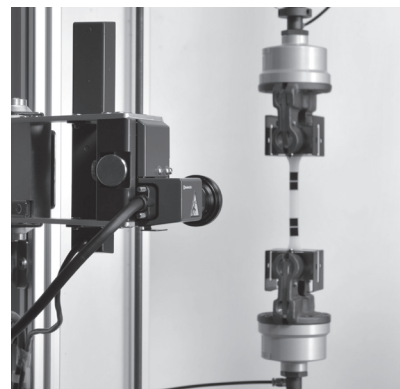


Specifications

Item	Specifications
Frame rate for strain distribution calculations	Real time: 3 fps Recalculation after testing: 15 fps
Available lens type	Field of view 120 mm or 240 mm
Compatible image sizes	Standard size only
Operating environment	Temperature: 5°C to 35°C Humidity: 20 to 80% *Measurement in temperature-controlled environmental chamber is not supported.

Note 1: Two A3 sized grid stickers are provided as standard.

Note 2: The strain distribution calculation results are reference values.



TRAPEZIUM is a trademarks of Shimadzu Corporation.



Shimadzu Corporation
www.shimadzu.com/an/

For Research Use Only. Not for use in diagnostic procedures.

This publication may contain references to products that are not available in your country. Please contact us to check the availability of these products in your country.

Company names, products/service names and logos used in this publication are trademarks and trade names of Shimadzu Corporation, its subsidiaries or its affiliates, whether or not they are used with trademark symbol "TM" or "®".

Third-party trademarks and trade names may be used in this publication to refer to either the entities or their products/services, whether or not they are used with trademark symbol "TM" or "®".

Shimadzu disclaims any proprietary interest in trademarks and trade names other than its own.

The contents of this publication are provided to you "as is" without warranty of any kind, and are subject to change without notice. Shimadzu does not assume any responsibility or liability for any damage, whether direct or indirect, relating to the use of this publication.

© Shimadzu Corporation, 2020
 First Edition: February 2020 3655-06001-PDFIT